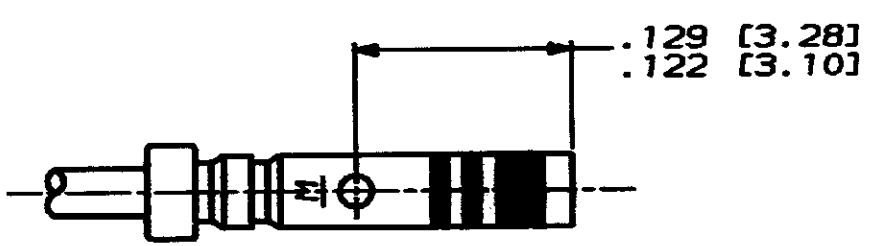
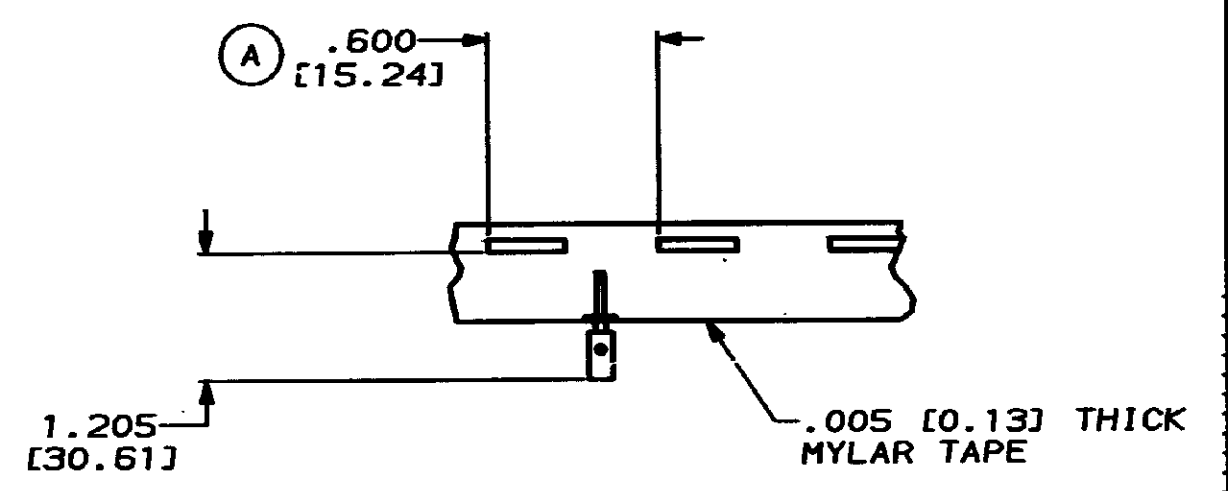
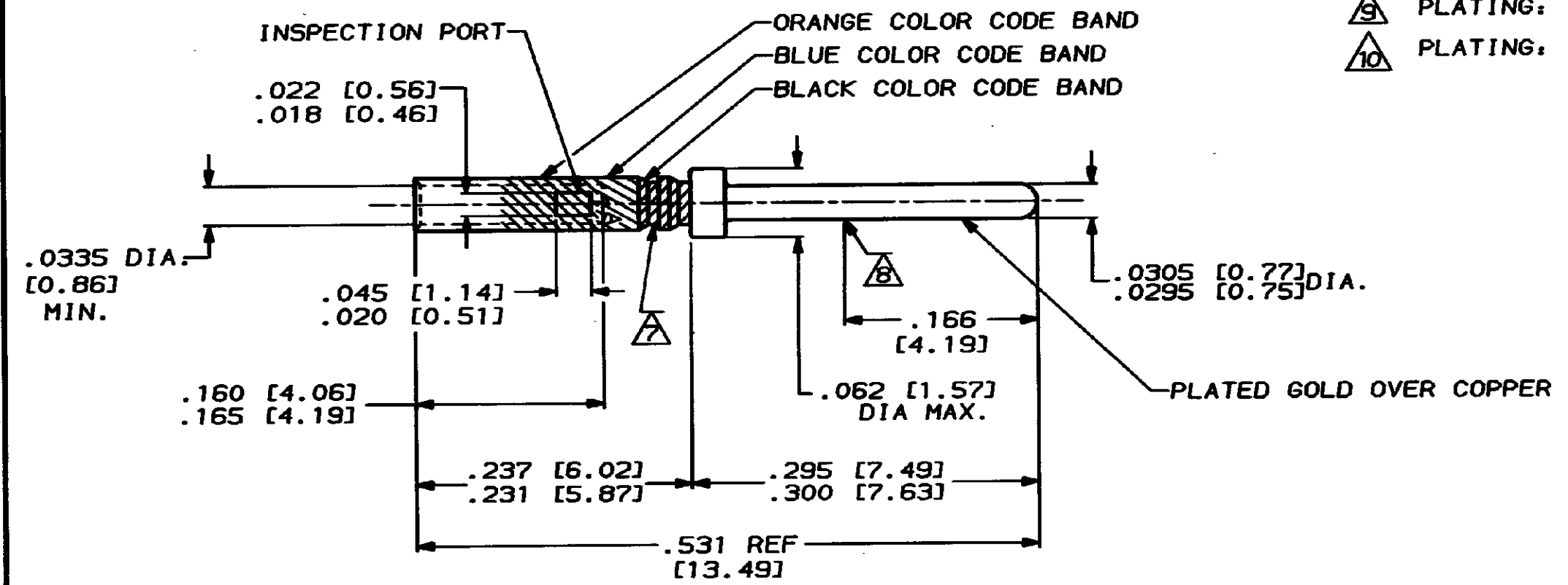


DRAWING MADE IN THIRD ANGLE PROJECTION
 THIS DRAWING IS UNPUBLISHED. RELEASED FOR PUBLICATION .19
 © COPYRIGHT 19 BY AMP INCORPORATED. ALL INTERNATIONAL RIGHTS RESERVED.

PROJ	LOC	DIST	REV	ZONE	LTR	DESCRIPTION	DATE	APPD
S064	DF	DO				REV & REDWN PER DF-3808	BR	AE

1. WIRE BARREL WILL ACCEPT #22-28 AWG WIRE.
 2. CRIMPING TOOL- USE MS3198-1 WITH APPLICABLE POSITIONER.
 3. CONTACT CONFORMS TO MIL-C-39029/58, SIZE 22. & MS27493-22D.
 4. NET WEIGHT- .072 GRAMS.
 5. INSERTION, EXTRACTION TOOL- AMP P/N 91067-1.
- △ THIS CONTACT IDENTIFIED AS MS27493-22D SUPERSEDES M24308/13-1.
 - △ IDENTIFICATION GROOVE IS OPTIONAL.
 - △ POINT OF PLATING THICKNESS MEASUREMENT.
 - △ PLATING: GOLD PER MIL-G-45205 OVER NICKEL PER QQ-N-290.
 - △ PLATING: GOLD PER MIL-G-45204 OVER COPPER PER MIL-C-14550



ALTERNATE CONFIGURATION

WHEN ORDERING CONTACT ON TAPE, ORDER BY THE TAPE NUMBER PLUS THE PACKAGEING CODE AS FOLLOWS:

2. FOR USE WITH AMP TAPETRONIC, PNEUMATIC TOOL-
 A. 1000 PARTS TO A BOX ADD PACKAGING CODE: 1MBOX
3. FOR USE WITH 4/8 INDENT STRIPPER CRIMPER-
 A. 1000 PARTS TO A REEL ADD PACKAGING CODE: 1MREEL
 B. 5000 PARTS TO A REEL ADD PACKAGING CODE: 5MREEL

WITHOUT COLOR CODE	△	204370-8
CONTACTS ON TAPE	SAME AS -2	204370-5
AS SHOWN	△	204370-2
DESCRIPTION	PLATING	PART NO.

DO NOT SCALE PRINT. UNLESS SPECIFIED DIMENSIONS IN mm (INCHES) TOLERANCES ON . 2 PLC DEC ± . 3 PLC DEC ± .005 ANGLES ±	DR 10-3-90 R. RINEHART	AMP AMP Incorporated Harrisburg, PA 17105-3608
	CHK R. Rinehart 10-15-90	
MATERIAL	APPD R. Rinehart 10-15-90	NAME CONTACT PIN, SIZE 22D AMPLIMITE
FINISH	PRODUCT SPEC	SIZE CAGE CODE DRAWING NO C 00779 204370
	APPLICATION SPEC	SCALE 10:1 SHEET 1 OF 1
	WEIGHT	

CUSTOMER DRAWING

204370